

TOMORROW TODAY



AIR™

Simply better

gehealthcare.com/mr





Simply better

It's time for a simply better MR experience. An experience that embraces the clinical power of MR with a more ubiquitous design. For us, this is AIR™.

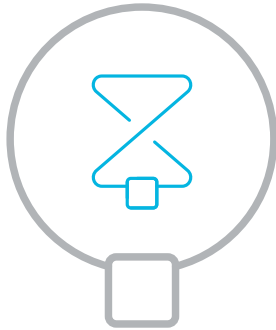
AIR™ is more than a name. It's a way of thinking. A symbol for how we approach both the form and the function of MR. From coils to workflow to image quality, we deconstruct everything down to its most fundamental, simplified version. And improve it. Each new innovation builds off of this core philosophy, increasing the value of the greater AIR™ ecosystem.

Holistically, AIR™ is MR. Simply better.



Welcome to the AIR™ family

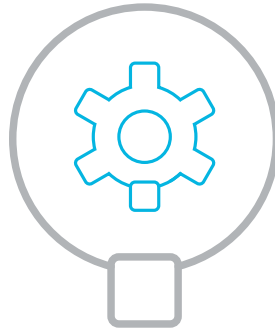
The AIR™ family of products delivers clinical versatility and comfort, intelligent productivity improvements and consistently superior image quality.



AIR™ Coils

It started with an engineering breakthrough that led to the industry's first truly lightweight coil design. A design that conforms to the human body like a comforting blanket completely changing the patient experience. But this was just the start.

■ Clinical versatility and comfort



AIR™ Workflow

The technology at the core of this new coil design laid the groundwork for intelligent applications that automate and personalize fundamental steps in the MR workflow, so you can expect consistent image quality in predictable scan times from any technologist.

■ Intelligent productivity improvements



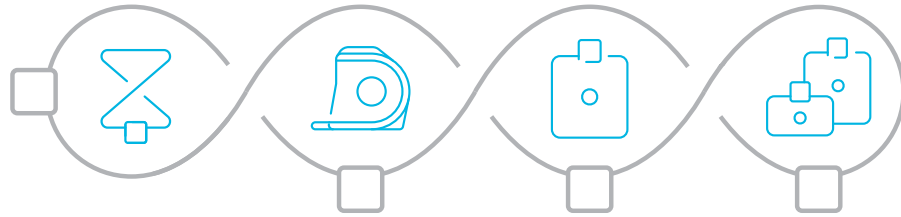
AIR™ Image Quality

Now, we're adding reconstruction software that reduces background noise and out-of-FOV artifacts to foundationally improve the quality of your MR images. With deep learning, it can remove noise directly from the raw image data.

■ Consistently superior image quality



AuntMinnie.com
THE BEST OF RADIOLOGY
WINNER



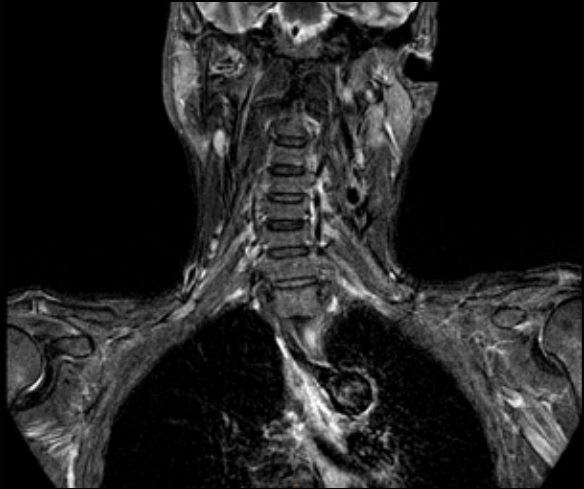
AIR™ Coils

Clinical versatility and comfort

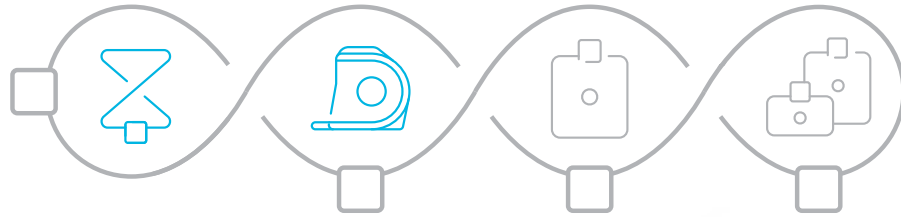
Awarded Best New Radiology Device of 2019, AIR™ Coils are the foundation of a simply better MR experience. The engineering breakthrough at the heart of our AIR™ Coils allowed us to create a revolutionary coil design that is lighter, offers more flexibility and provides greater coverage, laying the groundwork for greater positioning freedom and a comfortable patient experience.



Lightweight and bendable, this series of linked resonators replaces what used to be rigid circuit boards and lumped components. It's the flexible core of our form-fitting coil design.



Brachial Plexus
0.7 x 0.7 x 3 mm
3:30 min



AIR™ 48ch Head Coil

Designed in collaboration with the NFL* for high-performance brain imaging.

- Adjustable to fit 99.99 percent of patients
- Fit-adaptable, comfort tilt design
- Improved parallel imaging

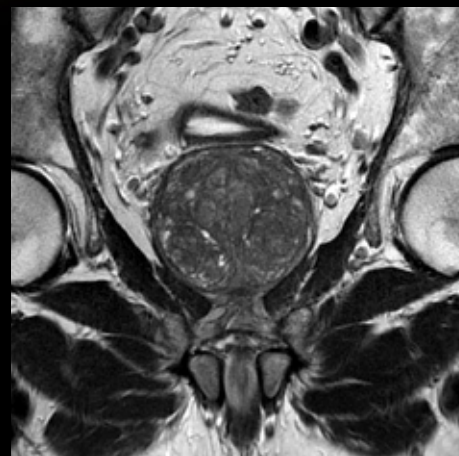


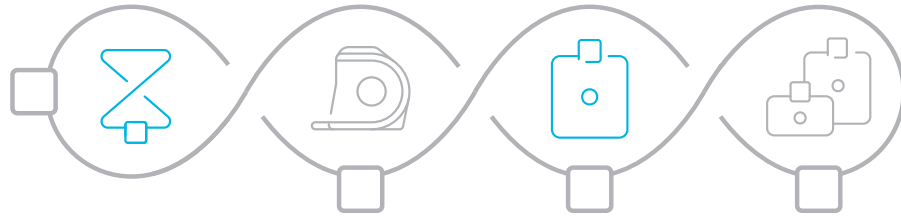
*In 2013, GE and the National Football League (NFL) teamed up to launch the Head Health Initiative, a collaboration to accelerate diagnosis and improve treatment for traumatic brain injury.



Automatic coil element
selection for the prostate
with AIR Touch™

Axial T2 FSE
0.7 x 0.7 x 2.5 mm





AIR™ Anterior Array Coil

Scan the chest, abdomen and pelvis without repositioning the coil.

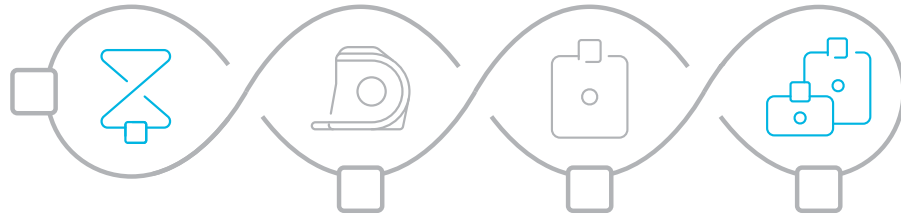
- 65 cm of coverage
- 30-channel design
- Weighs less than 0.35 grams per cm²





360 degrees of coverage
for large feet/ankles
Sagittal PD FSE
0.3 x 0.4 x 3 mm





AIR™ Multi-Purpose Coils*

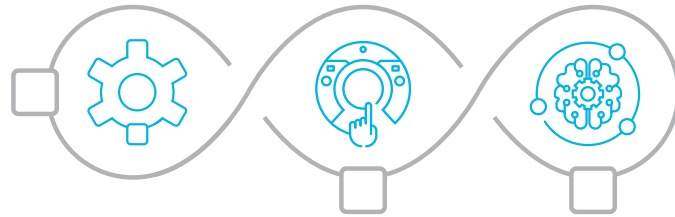
Easy ortho, body and cardiac scans with medium and large sizes.

- 360 degrees of coverage
- 20 and 21-channel designs
- As much as 35 percent lighter per channel**



*Not yet CE marked. Not available for sale in all regions.

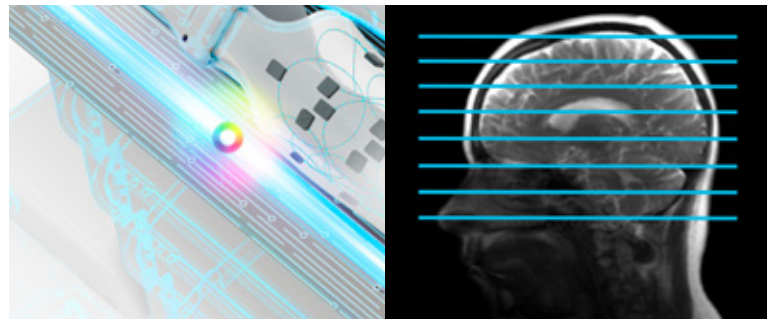
**Compared to previous generations of conventional coil technology.



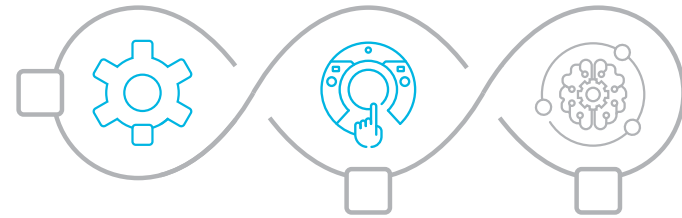
AIR™ Workflow

Intelligent productivity improvements

Enhance your MR productivity with intelligent workflow applications developed to optimize your scans with accelerated scan times, increase diagnostic confidence across skill levels and consistently deliver accurate results. Automated applications, AIR Touch™ and AIR x™, make a clinically impactful difference for a simply better workflow.







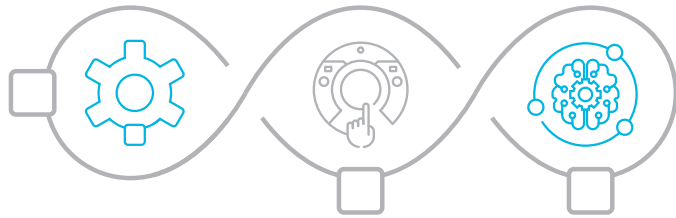
AIR Touch™

Smart coil selection that automatically knows the best combination for every patient.

- Simplifies scan setup with customized parameters
- Optimizes uniformity and SNR
- Automatically selects which coils and elements to use



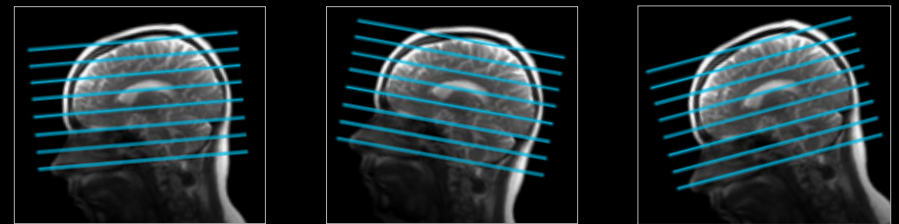
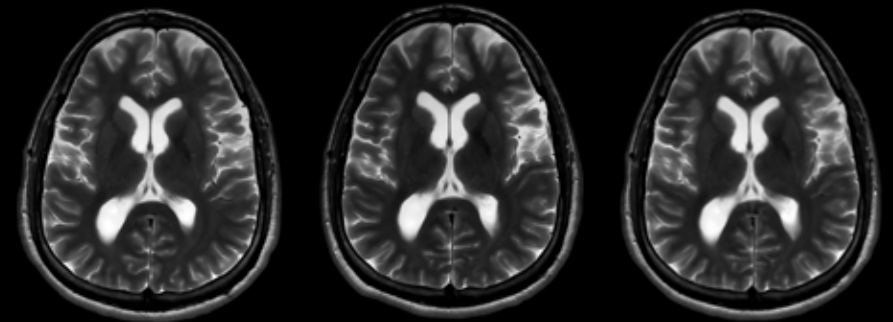
AIR Touch™ acts as the bridge between the coils and the system, allowing you to landmark your patient with a single touch.



AIR x™

Intelligent MR slice prescription for routine and challenging neurological exams.

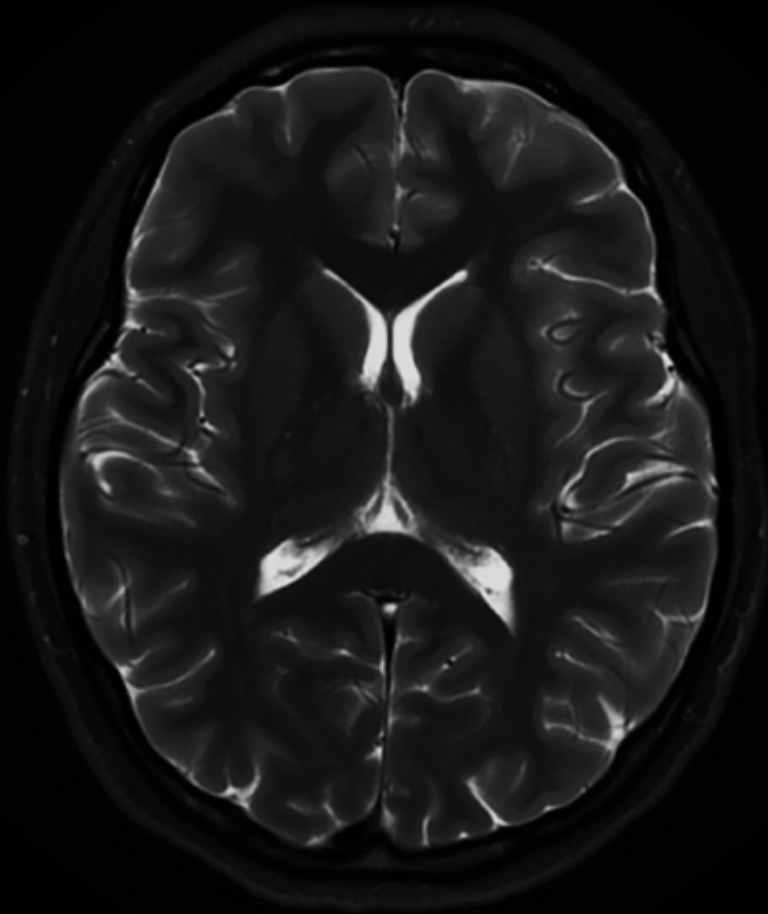
- Powered by a deep learning algorithm created from a database of 36,000 images
- Automatically detects anatomy and prescribes slices in the brain
- Delivers consistent and quantifiable results
- Helps eliminate rescans and scanning inefficiencies



Time point one

Time point two

Time point three



AIR™ Image Quality

Consistently superior image quality

Reconstruction is at the heart of every scan and reducing noise during reconstruction is critical to achieving clear images. AIR™ Image Quality completes the AIR™ family of products with image reconstruction software that helps improve SNR and image sharpness in every image without having to overcompensate in your scanning protocol.



AIR™ Recon

Makes exceptional image quality in faster scan times the new standard for MR imaging. It reduces background noise and out-of-FOV artifacts for an improved SNR and clearer, crisper images.

- Available on the majority of routine clinical scans
- Seamless to use and always on
- Available on several key applications like PROPELLER, Cube, FSE and Flex



Conventional



AIR™ Recon



Clearly consistent images with AIR™ Recon



Conventional



AIR™ Recon

AIR™ 48ch Head Coil
0.5 x 0.5 x 2.5 mm
3:56 min

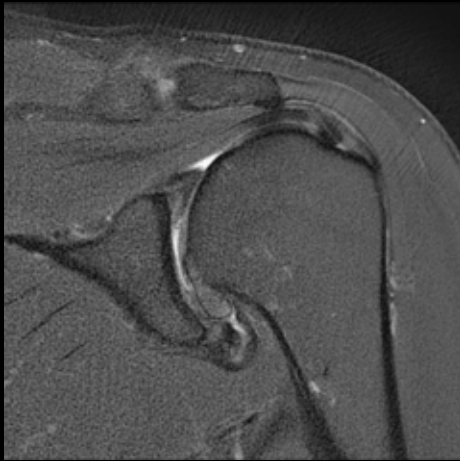


Conventional

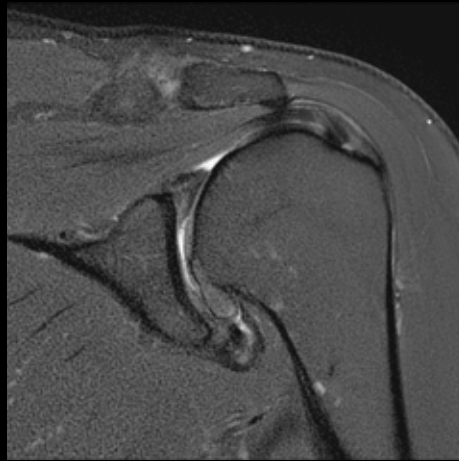


AIR™ Recon

AIR™ Anterior Array Coil
0.5 x 0.5 x 3 mm
5:02 min

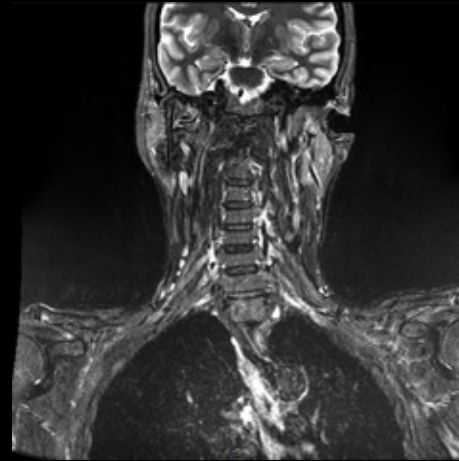


Conventional

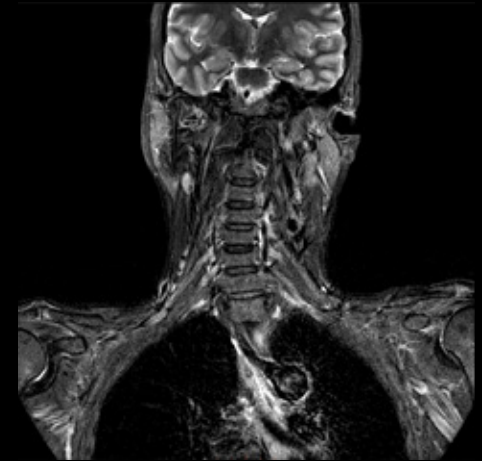


AIR™ Recon

AIR™ Multi-Purpose Coil,* Large
0.4 x 0.4 x 3 mm
3:34 min

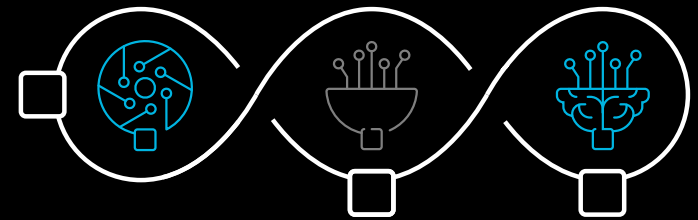
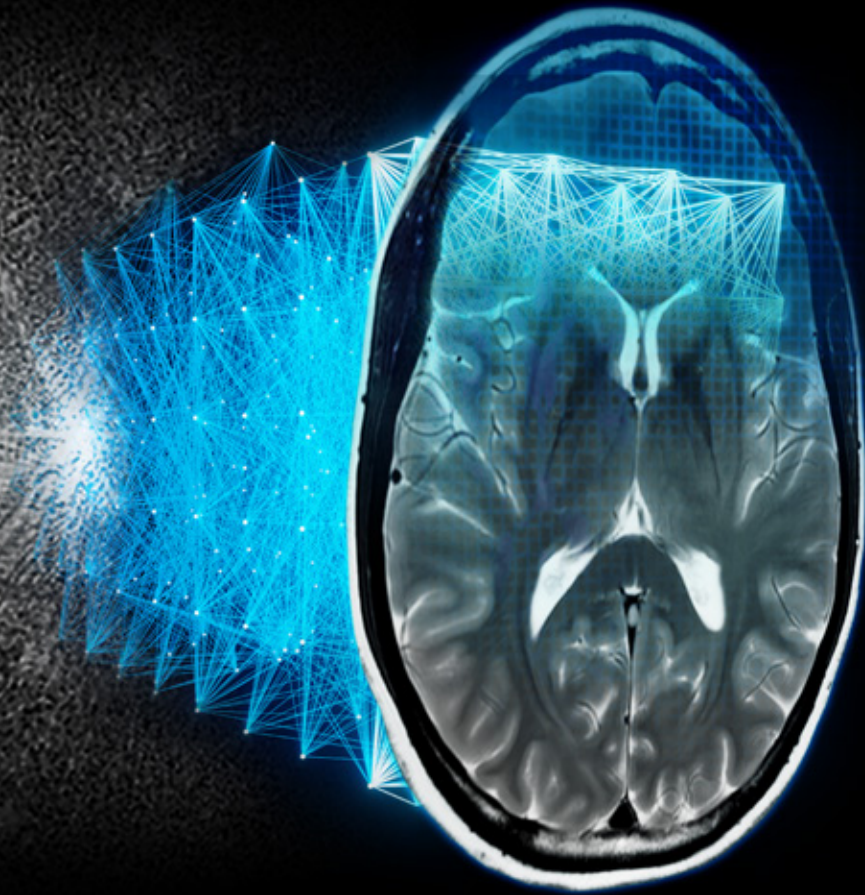


Conventional



AIR™ Recon

AIR™ 48ch Head Coil
and AIR™ Multi-Purpose Coil,* Large
0.7 x 0.7 x 3 mm
3:30 min



AIR™ Recon DL

AIR™ Recon DL[†] is a pioneering, deep learning based reconstruction algorithm that improves SNR and image sharpness, enabling shorter scan times. It improves image quality at the foundational level by making use of the raw data to remove image noise and ringing.



Increases productivity by enabling shorter scan times



Removes image noise and ringing by leveraging raw image data



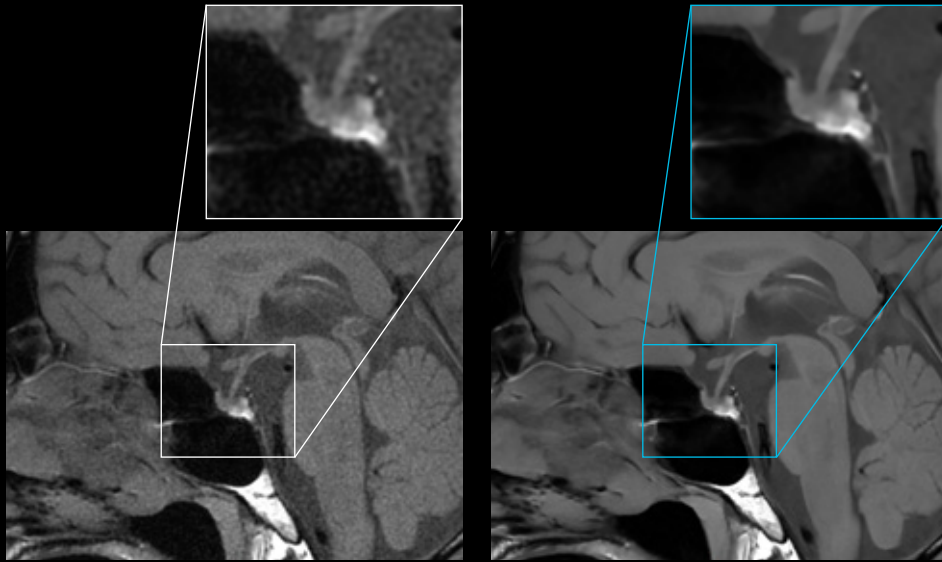
Delivers sharper and clearer TrueFidelity™ MR images



Enables you to set your preferred SNR improvement level



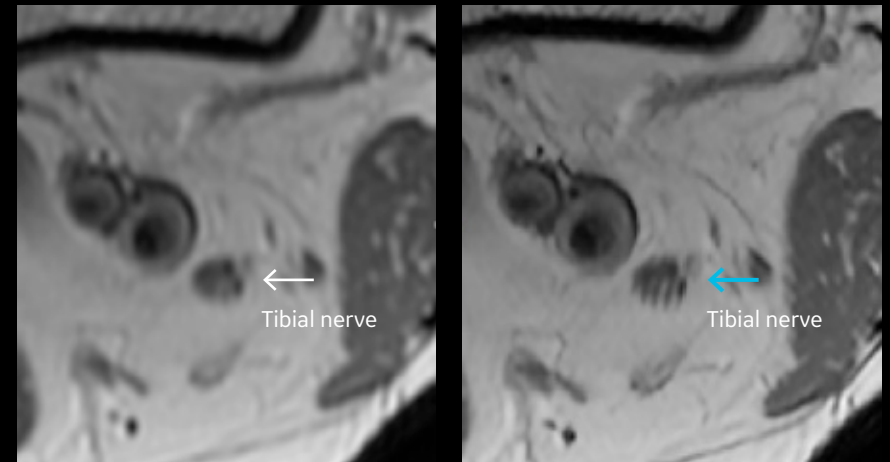
Level up your image quality with AIR™ Recon DL



Conventional

AIR™ Recon DL[‡]

AIR™ 48ch Head Coil
FSE T1
260 x 260
2:15 min



Conventional

AIR™ Recon DL

AIR™ Multi-Purpose Coil,* Medium
FSE PD
256 x 180 (1 NEX)
1:10 min

[‡]Not yet CE marked. Not available for sale in all regions. Currently only available on 3.0T systems.
^{*}Not yet CE marked. Not available for sale in all regions.

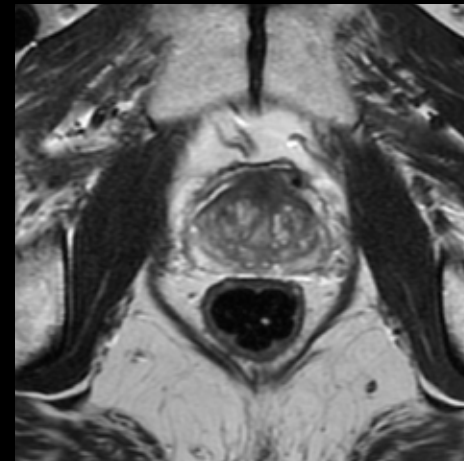


Conventional
352 x 256
1:59 min

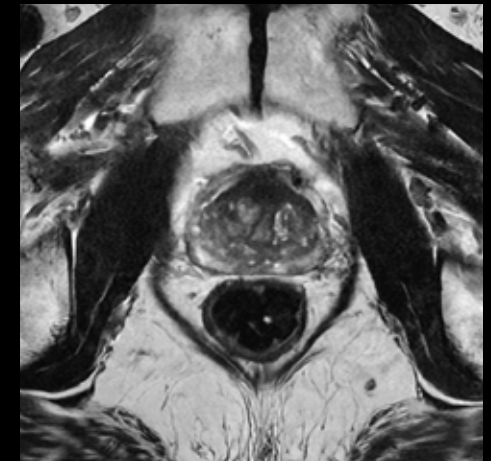


AIR™ Recon DL[†]
640 x 384
1:18 min

8ch Foot/Ankle Coil
FSE PD



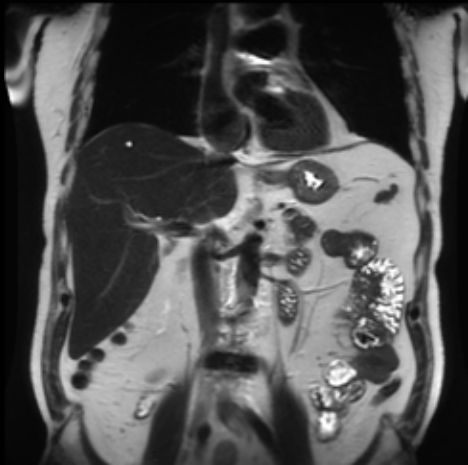
Conventional
0.6 x 1.0 x 3 mm
3:50 min



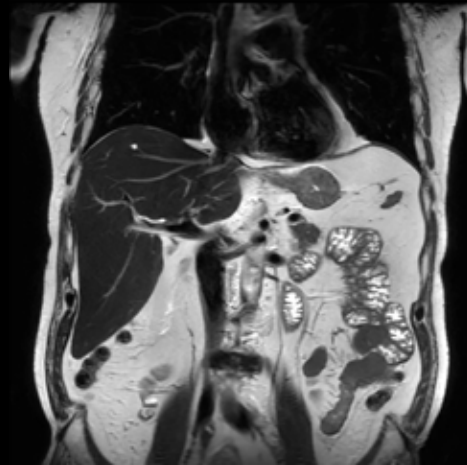
AIR™ Recon DL
0.4 x 0.6 x 3 mm
1:37 min

AIR™ Multi-Purpose Coil,^{*} Large
FSE T2
300 x 300

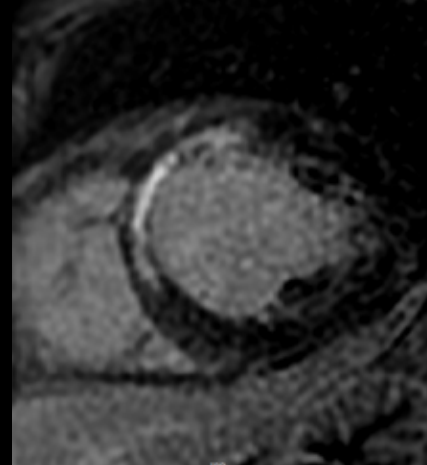
[†]Not yet CE marked. Not available for sale in all regions. Currently only available on 3.0T systems.
^{*}Not yet CE marked. Not available for sale in all regions.



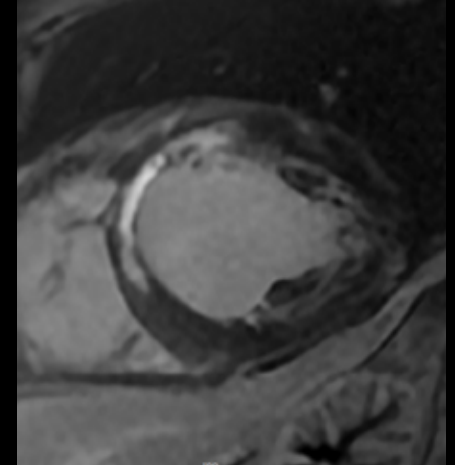
Conventional



AIR™ Recon DL[‡]



Conventional



AIR™ Recon DL

AIR™ Anterior Array Coil
Coronal T2 SSFSE
1.3 x 2.2 x 4 mm
0.9 sec

AIR™ Multi-Purpose Coil,* Medium
1.7 x 2.8 x 6 mm
57 sec

[‡]Not yet CE marked. Not available for sale in all regions. Currently only available on 3.0T systems.
^{*}Not yet CE marked. Not available for sale in all regions.



Get closer to what you need to see

AIR™ combined with the advanced applications of SIGNA™Works enables diagnostic confidence in every scan through industry-leading image quality and imaging capabilities.

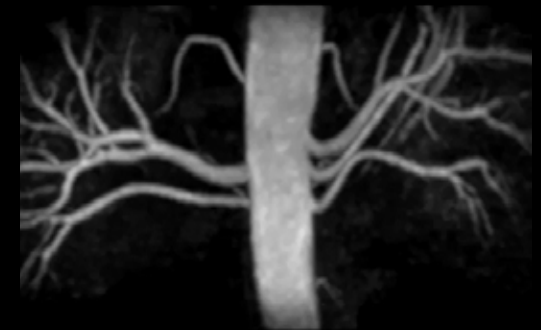
AIR™ Anterior Array Coil



Two-station chest/abdomen/pelvis
acquired without moving the coil
or subject



Sagittal T2 PROPELLER MB
0.7 x 0.7 x 3.5 mm



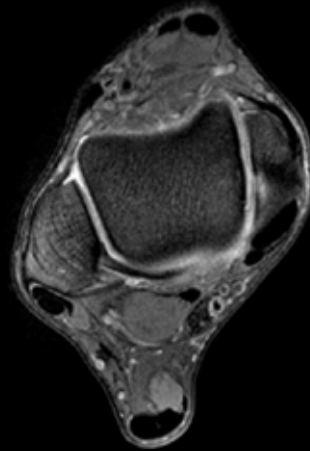
Axial Inhance IFIR
Non-contrast, Coronal reformat
0.8 x 1.3 x 1.6 mm



AIR™ Multi-Purpose Coils*



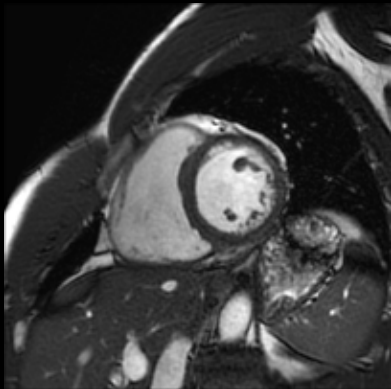
Coronal T1 FSE
0.3 x 0.5 x 3 mm



Axial MERGE
0.3 x 0.4 x 2.5 mm



Coronal PD FSE
0.2 x 0.3 x 2.5 mm



FIESTA Cine Short Axis
1.6 x 1.6 x 6 mm

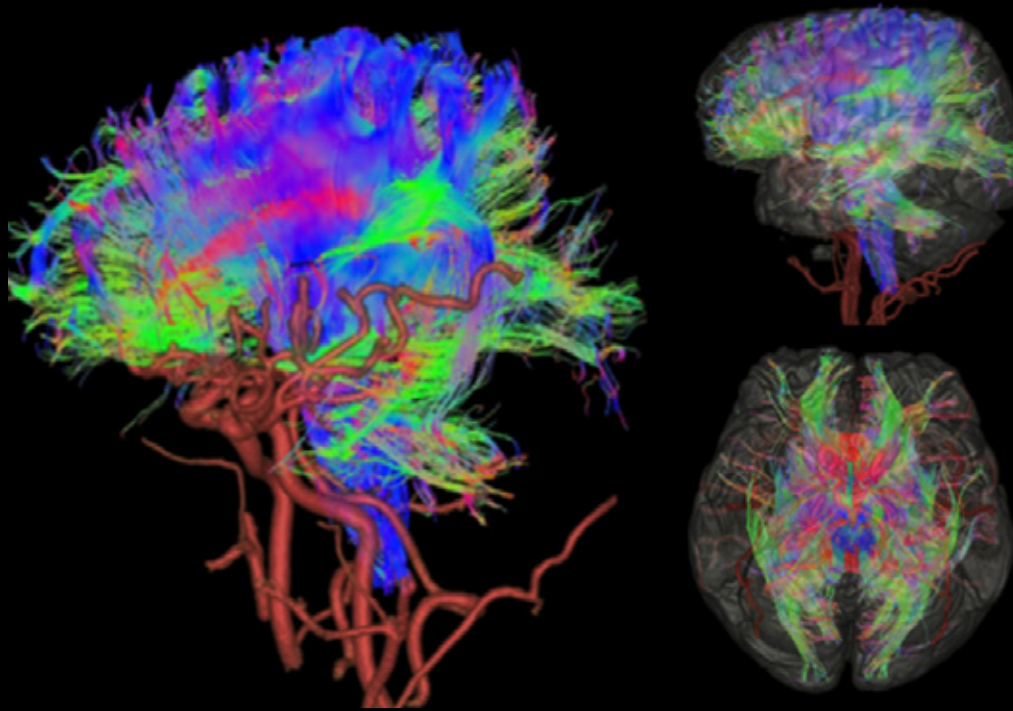


Sagittal PD FSE
0.3 x 0.4 x 2.5 mm

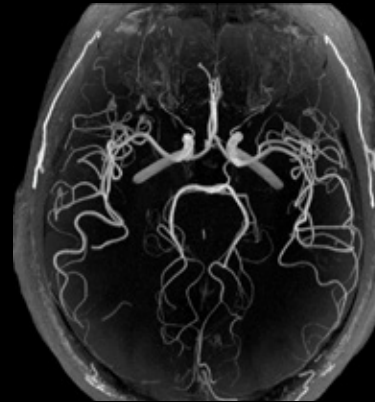


Coronal PD FSE
0.4 x 0.5 x 3 mm

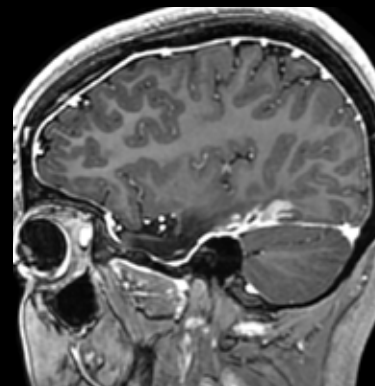
AIR™ 48ch Head Coil



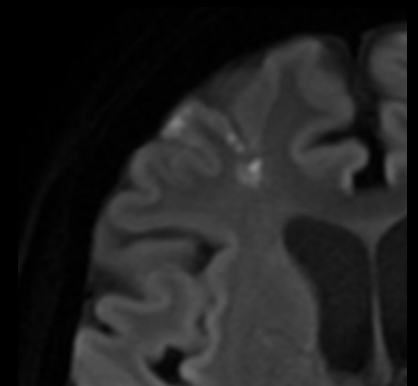
Volume rendering
HyperBand DTI FiberTrak fused with HyperSense 3D TOF



HyperSense
3D TOF
0.3 x 0.3 x 0.5 mm



3D BRAVO
1 x 1 x 1 mm



MUSE DWI
b1000
0.9 x 0.8 x 5 mm

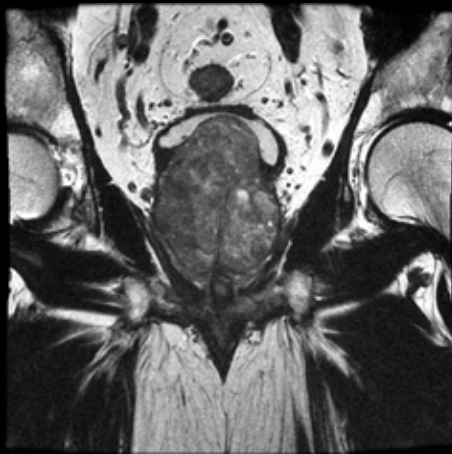


Coil combinations with AIR Touch™

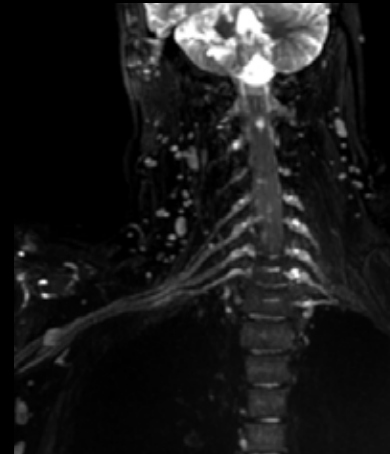
AIR Touch™ automatically selects the best coil combination and utilizes anatomical-based protocol optimization to personalize care and improve exam times by 53 percent.**



AIR™ 48ch Head Coil +
AIR™ Anterior Array Coil +
Posterior Array
Sagittal T2 frFSE
0.6 x 0.9 x 3 mm



AIR™ Multi-Purpose Coil* +
Posterior Array
Coronal T2 FSE
0.6 x 0.7 x 3 mm



AIR™ 48ch Head Coil +
AIR™ Anterior Array Coil +
Posterior Array
Coronal T2 STIR with
HyperCube and HyperSense
1.25 x 1.25 x 1.6 mm



Curved reformat

Sagittal reformat

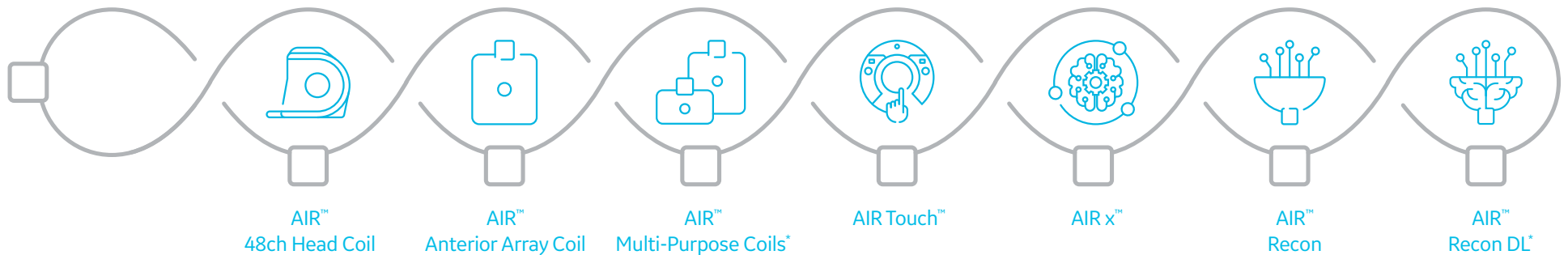
Axial reformat

Two AIR™ Anterior Array Coils +
Posterior Array
Coronal STIR FSE
1 x 1.8 x 2.5 mm

*Not yet CE marked. Not available for sale in all regions.
**Compared to previous workflows without AIR Touch™.

It all links up to a simply better MR experience

What really sets our AIR™ family of products apart is the way they all work together. It started with an engineering breakthrough that led to the industry's first truly lightweight coil design and laid the groundwork for intelligent workflow applications and an all-new reconstruction algorithm. Each one builds off of the potential of the rest of the family, creating a chain of innovation that all links together to transform the entire MR experience.





AIRTM
Simply better



For more information, visit [gehealthcare.com/AIR](https://www.gehealthcare.com/AIR)
or contact your GE Healthcare Sales Representative.

GE Healthcare is a leading global medical technology and digital solutions innovator. GE Healthcare enables clinicians to make faster, more informed decisions through intelligent devices, data analytics, applications and services, supported by its Edison intelligence platform. With over 100 years of healthcare industry experience and around 50,000 employees globally, the company operates at the center of an ecosystem working toward precision health, digitizing healthcare, helping drive productivity and improve outcomes for patients, providers, health systems and researchers around the world. Follow us on Facebook, LinkedIn, Twitter and Insights, or visit our website www.gehealthcare.com for more information.

Images courtesy of Asan Medical Center, Korea; Hospital for Special Surgery, NY; Centre Cardiologique du Nord, Paris; University of Yamanashi, Japan; Haeundae Paik Hospital, Korea.

© 2020 General Electric Company - All rights reserved.

GE Healthcare reserves the right to make changes in specifications and features shown herein, or discontinue the product described at any time without notice or obligation. Contact your GE Healthcare representative for the most current information. GE, AIR, SIGNA, AIR Touch, AIR x and the GE Monogram are trademarks of General Electric Company. GE Healthcare, a division of General Electric Company.
GE Medical Systems, Inc., doing business as GE Healthcare.

JB69383XX(1)