



Lung Protection strategy: an integrated approach

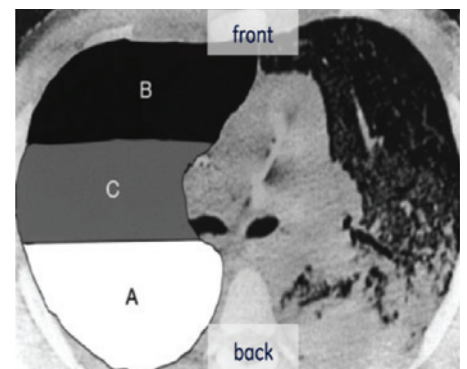
The lung is a delicate structure that is highly sensitive. Mechanical ventilation can be detrimental if too much volume or pressure is delivered. And patients affected by lung disease are highly susceptible to ventilation-associated lung injury.¹

A Lung Protection strategy can help ensure the different zones receive the treatment they need

Lung zone	Clinical need:
A = Atelectasis	▶ Keep the lung open ^{2,3,4}
B = Baby healthy lung	▶ Reduce tidal volume ^{4,5}
C = Cycling Opening/Closing	▶ Stabilize the lung (PEEP) ⁶

CARESCAPE® R860 offers an integrated solution

Lung zone	CARESCAPE R860 advanced tools
A = Atelectasis	▶ FRC & static compliance ▶ FRC INview ⁷
B = Baby healthy lung	▶ P-V curve ▶ SpiroDynamics
C = Cycling Opening/Closing	▶ PEEP titration & Vd/Vt ▶ PEEP INview* & Vent Calcs



CT scan that shows uneven distribution of disease¹ Each zone has unique treatment needs.

A = Atelectasis **B** = Baby healthy lung
C = Cycling Opening/Closing

The CARESCAPE R860 was designed with a simple and universal navigation scheme. The Lung Protection tools calculate FRC, providing the clinician with data for determining the optimal PEEP setting for the patient.



References

- 1 E. D. Moloney and M. J. D. Griffiths,
British Journal of Anaesthesia 92 (2): 261±70 (2004)
- 2 Hedenstierna G, Acta Anaesthesiol Scand 2012, 56: 675-685
- 3 Gattinoni L, N Engl J Med 2006;354:1775-86
- 4 Brunner J, Intensive Care Med. 2009, 35:1479-83
- 5 Rouby JJ, Anesthesiology 2004; 101: 228-34
- 6 Gattinoni L, Current Opinion in Critical Care 2004, 10:272-278
- 7 Chiumello D, Crit Care Med 2008, 12:R150 doi:10.1186/cc7139